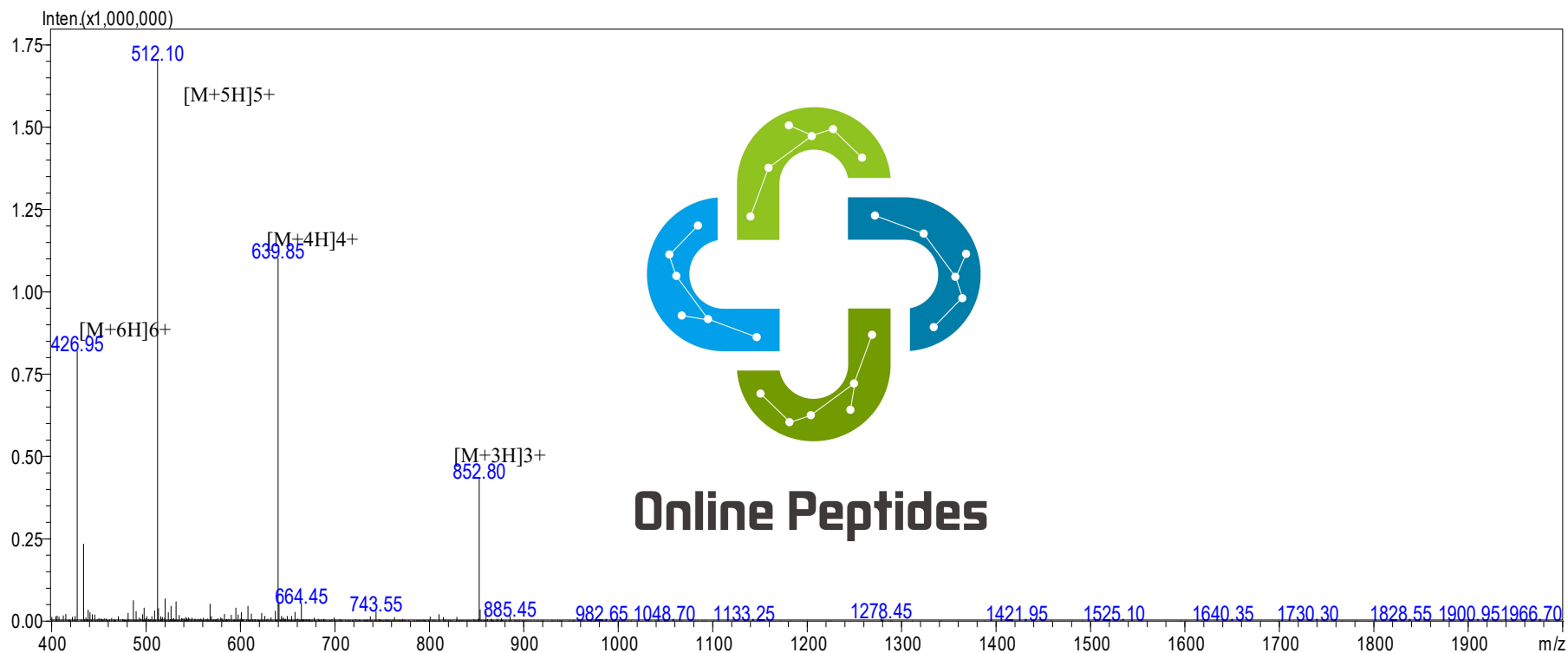


# ADIPOTIDE MS TEST REPORT



Sample :Adipotide  
MW :2555.22  
Lot No. :P170919ADI

Probe: ESI  
Nebulizer Gas Flow: 1.5L/min  
CDL: -20.0v  
CDL Temp: 250°C  
Block Temp: 200°C

Probe bias: +4.5kv  
Detector: 1.5kv  
T. Flow: 0.2ml/min  
B. conc: 50%H2O/50%ACN