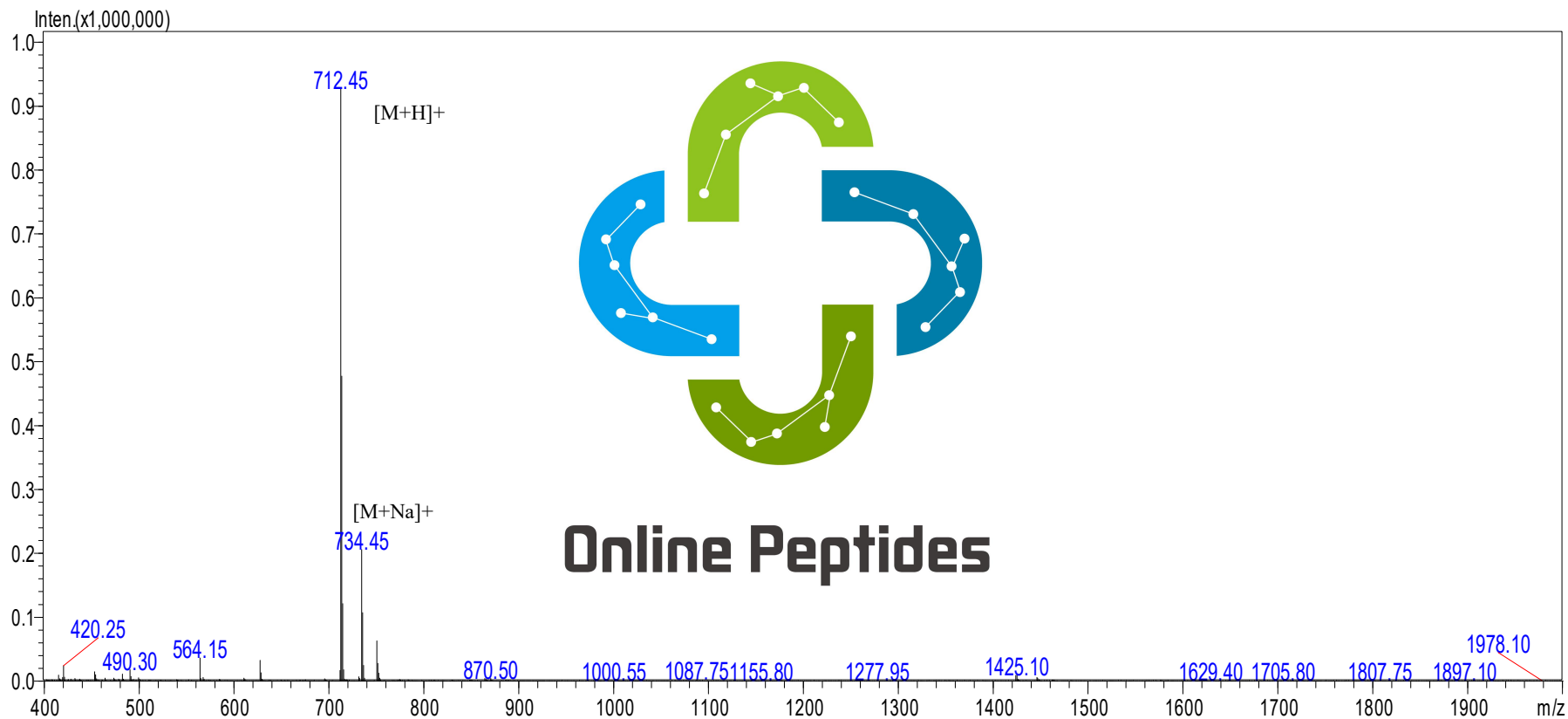


# Ipamorelin MS Test REPORT



Date and Time: 2017-8-26 12:25:2

Sample : Ipamorelin

MW : 712.03

Lot No. : P170826IP

Probe: ESI  
Nebulizer Gas Flow: 1.5L/min  
CDL: -20.0v  
CDL Temp: 250°C  
Block Temp: 200°C

Probe bias: +4.5kv  
Detector: 1.5kv  
T. Flow: 0.2ml/min  
B. conc: 50%H2O/50%ACN